



TWO-PIECE GRIPPER CHAINS - GS 1873T SERIES

GS 1873T chain for side-grip conveyors

Regina GS 1873T FliteTop® gripper chain is specifically developed for handling containers at different heights on elevators, lowerators, pass through conveyors and rinsers. The special D-shape rubber pads provide an even and fine-tuned force on the container for every application allowing for a high chain wear resistance due to the less specific pressure between chain and wear strips.



KEY FEATURES & BENEFITS

IMPROVED CONTAINER HANDLING

Some side-grip conveyors equipped with “long fingers” gripper chains show the typical “kick-out effect” of containers, in particular for those with square design, when they are released by the rubber pads at the conveyor outfeed. This effect can lead to containers falling and downtime. The special rubber pads design of the new GS 1873T FliteTop® gripper chain eliminates this “kick-out effect”, ensuring the maximum stability for each type of container.

PARTICULARLY SUITABLE FOR SQUARE/OVAL SHAPED CONTAINERS

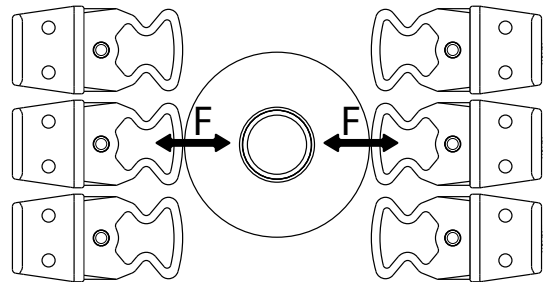


MAXIMIZED CHAIN LIFE

Regina GS 1873T FliteTop® gripper chain is characterized by the superior flexibility of the “Special D-Shape” rubber pads, which minimize the gripping force on the container in every application, even with excessive rubber pad compression.

This special feature leads to a minimum pressure between the chain flights and the wear strips, which results in a reduced base roller chain tension and, as a consequence, a higher chain life. Depending on the type of application, the new GS 1873T FliteTop® gripper chain can reduce the chain tension on a side-grip conveyor up to 50%, compared to current “D-Shape” gripper chains present on the market.

ONLY THE RIGHT AND NOT EXCESSIVE GRIPPING FORCE!



SIMPLE CONVEYOR SETUP

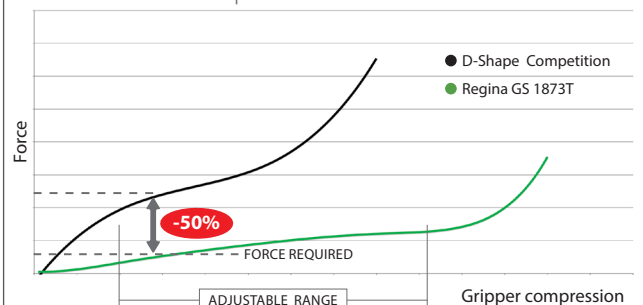
The superior flexibility of the “Special D-Shape” rubber pad allows to easily adjust the distance between the two strands of chain in case of multifformat containers, without worrying about the possible risk of base chain overload, caused by excessive rubber pad compression.

HYGIENIC DESIGN

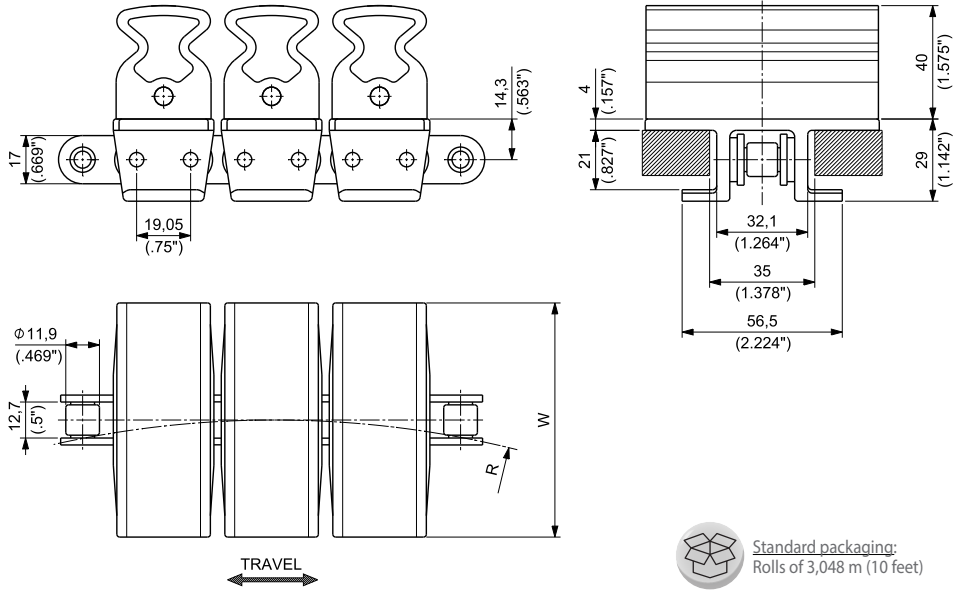
The closed design of the “Special D-Shape” rubber pads allows for easy cleaning, ensuring the maximum hygiene in application.

50% CHAIN TENSION REDUCTION USING REGINA GS 1873T SERIES

GRIPPER PADS | FORCE - COMPRESSION ANALYSIS



TAB PLASTIC FLIGHTS
 3/4" PITCH ROLLER CHAIN
 SPECIAL D-SHAPE RUBBER PAD
 SYMMETRICAL AND BIDIRECTIONAL
 THICKNESS 4 mm (0.157")
 HINGE 32,1 mm (1.264")

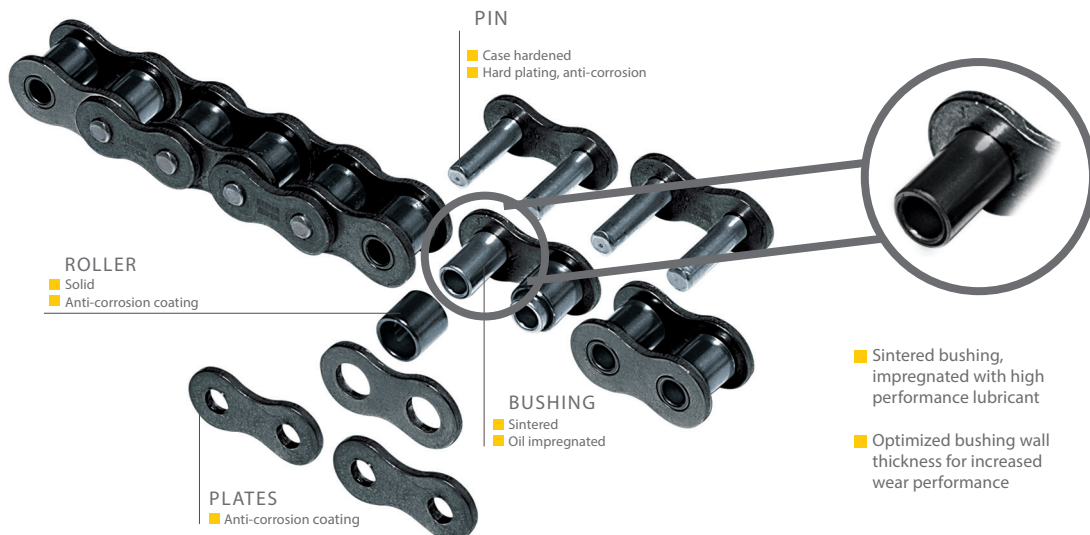
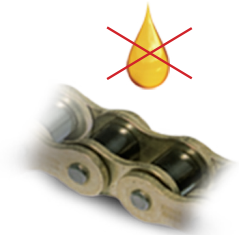


Standard packaging:
 Rolls of 3,048 m (10 feet)

Flight	MATERIALS		ITEM DESCRIPTION	PART NUMBER	CONNECTING LINK PART NUMBER	WIDTH W		SIDEFLEXING RADIUS		WORKING LOAD (25°C/77°F)		WEIGHT	
	Base chain	Rubber				mm	inch	mm ^R	inch	N	lbs	kg/m	lbs/ft
ULTRA PERFORMANCE HOMOPOLYMER DELRIN® UP	CARBON STEEL	THERMOPLASTIC	GS 1873T UP K 3 1/4	GS1873UPKD/000	NEW 18/0873	82,6	3,25	355,6	14	4500	1012	4,02	2,70
			GS 1873T UP K 4 1/2	GS1873UPKG/000	114,3	4,50	355,6	14	4500	1012	4,79	3,22	
	STAINLESS STEEL	TPE Hardness: 50 ShA	GS 1873T UP SS K 3 1/4	GS1873UPSKD/000	NEW 18/SS873AB	82,6	3,25	355,6	14	3500	787	3,97	2,67
			GS 1873T UP SS K 4 1/2	GS1873UPSKG/000	114,3	4,50	355,6	14	3500	787	4,74	3,19	
	MAINTENANCE FREE CARBON STEEL	THERMOPLASTIC	GS 1873T UP BS K 3 1/4	GS1873UPBKD/000	NEW 18/873BS	82,6	3,25	355,6	14	3500	787	4,03	2,71
			GS 1873T UP BS K 4 1/2	GS1873UPBKG/000	114,3	4,50	355,6	14	3500	787	4,80	3,23	
SPECIAL DELRIN® REINFORCED WITH KEVLAR® DK2™	CARBON STEEL	THERMOPLASTIC	GS 1873T D2K K 3 1/4	GS1873D2KKD/000	NEW 18/0873	82,6	3,25	355,6	14	4500	1012	4,02	2,70
			GS 1873T D2K K 4 1/2	GS1873D2KKG/000	114,3	4,50	355,6	14	4500	1012	4,79	3,22	
	STAINLESS STEEL	TPE Hardness: 50 ShA	GS 1873T D2K SS K 3 1/4	GS1873D2KSKD/000	NEW 18/SS873AB	82,6	3,25	355,6	14	3500	787	3,97	2,67
			GS 1873T D2K SS K 4 1/2	GS1873D2KSKG/000	114,3	4,50	355,6	14	3500	787	4,74	3,19	
	MAINTENANCE FREE CARBON STEEL	THERMOPLASTIC	GS 1873T D2K BS K 3 1/4	GS1873D2KBKD/000	NEW 18/873BS	82,6	3,25	355,6	14	3500	787	4,03	2,71
			GS 1873T D2K BS K 4 1/2	GS1873D2KBKG/000	114,3	4,50	355,6	14	3500	787	4,80	3,23	

Gripper chain GS 1873T Series available with ENDURO maintenance free base chain

- “Heavy wall” sintered bushing, impregnated with USDA H1 food approved oil
- Hard plated pin
- Galvanically coated plates and rollers for resistance to mildly aggressive environment



BENEFITS

- DRAMATIC WEAR LIFE INCREASE COMPARED TO STANDARD CHAINS IN UN-LUBRICATED CONDITIONS
- ELIMINATE NEED FOR PERIODIC LUBRICATION
- NO PRODUCT OR EQUIPMENT CONTAMINATION
- RESISTANCE TO CORROSION IN MILDLY AGGRESSIVE ENVIRONMENT
- SAVINGS IN LUBRICATION AND MAINTENANCE COSTS

- Sintered bushing, impregnated with high performance lubricant
- Optimized bushing wall thickness for increased wear performance