

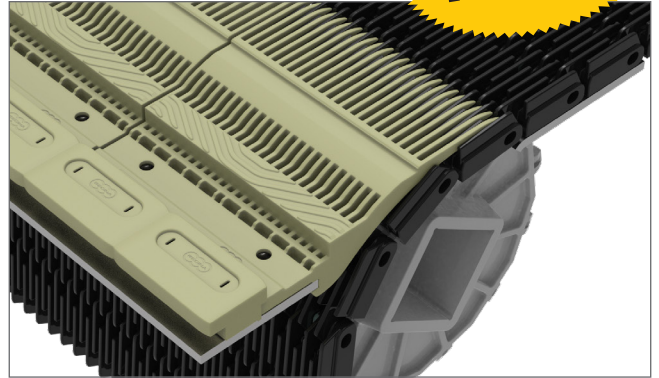


ACTIVE TRANSFER COMBS FOR 2" PITCH RAISED RIB BELTS

NEW

Active transfer combs for tunnel conveyors applications

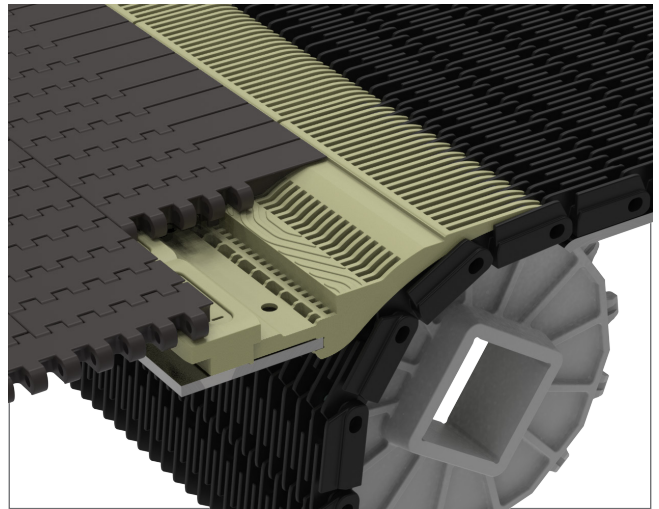
Regina active transfer combs provide successful self-clearing 90° transfers for pasteurizers, warmers or coolers in combination with Regina 3135 Series belt and USPM or 1305 Series ATM chains



KEY FEATURES & BENEFITS

CONTINUOUS PRODUCT FLOW

The system combines the smooth product transfer of the comb with raised rib belt and the self-clearing action of the ATM chains, eliminating dead plates at the infeed/outfeed of the tunnel conveyors so that the products do not accumulate in these areas.



SUPERIOR CONTAINER HANDLING

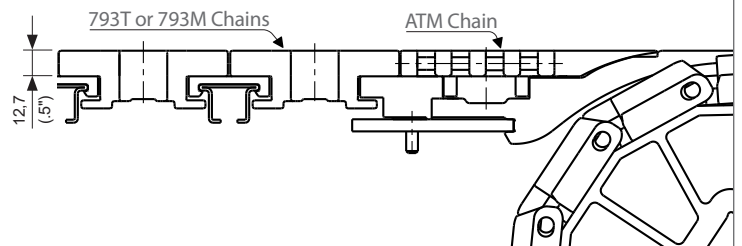
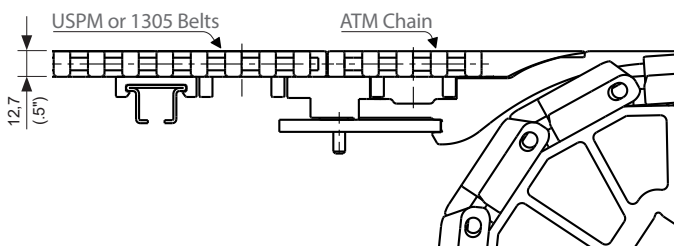
Regina active transfer combs provide higher stiffness compared to static transfer combs and ATM chains are fully supported at the infeed/dischage area of the conveyors, allowing for maximization of the product stability.

INSTALLATION WITH 12,7 MM (0.50") OR 8,7 MM (0.343") THICKNESS BELTS AND CHAINS

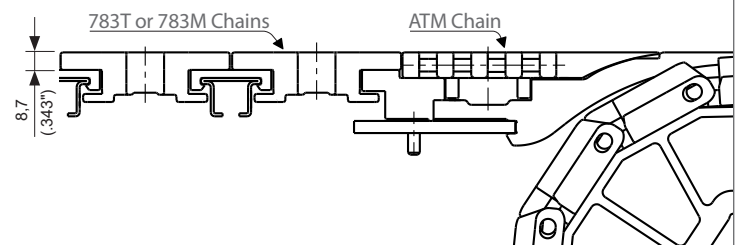
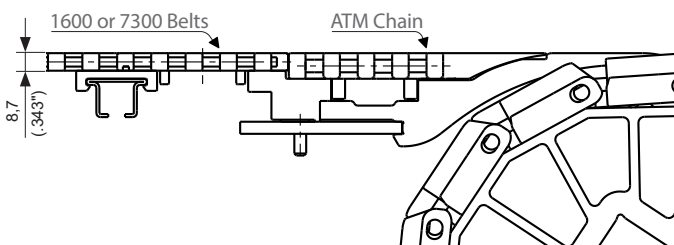
Regina offers a full range of active transfer combs where USPMG ATM 0085 chain or 1305G ATM 450 chain (both 12,7 mm - 0.50" thickness) can be used side by side with modular belts or sideflexing chains with the same thickness or with 8,7 mm (0.343") thickness, without the need for custom adjustment.

Regina active transfer combs also allow for the installation of sideflexing TAB chains side by side to the ATM chain, condition not possible with current active transfer combs present on the market.

- Example of installations using 12,7 mm (0.5") thickness modular belts or sideflexing chains (TAB or Magnetic), installed side by side with ATM chain 12,7 mm (0.50") thickness



- Example of installations using 8,7 mm (0.343") thickness modular belts or sideflexing chains (TAB or Magnetic), installed side by side with ATM chain 12,7 mm (0.50") thickness





ACTIVE TRANSFER COMBS FOR 2" PITCH RAISED RIB BELTS

NEW

SUITABLE FOR REGINA BELT SERIES:

• 3135

MATERIALS

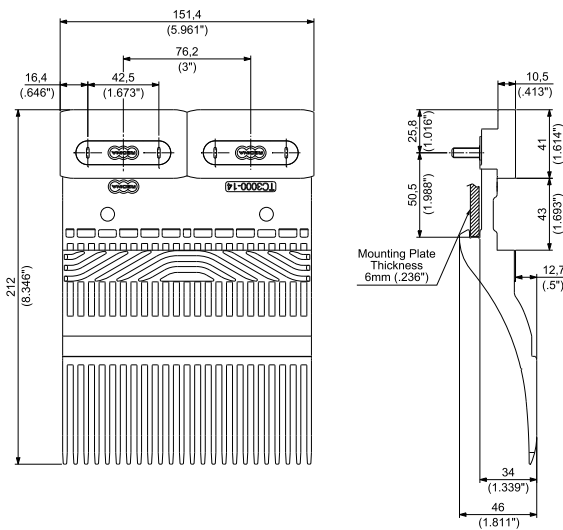
COMBS: SPECIAL THERMOPLASTIC POLYMER*

SCREWS: **SS** STAINLESS STEEL

*Suitable for working temperatures up to 104 °C (220 °F)

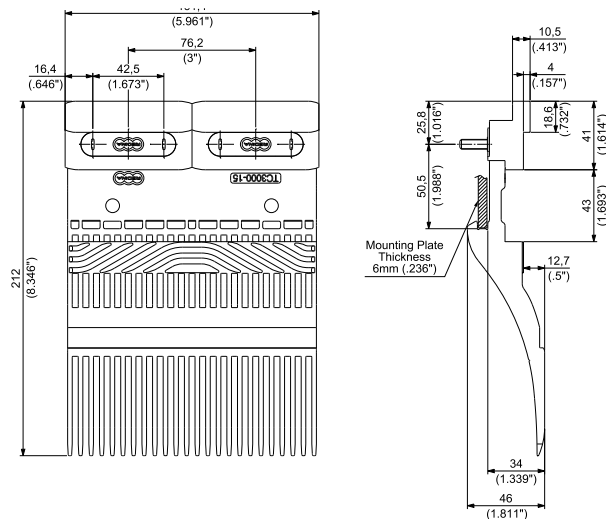
Combs P/N TC3000-14 and TC3000-15 are supplied complete with slot covers, bushings and fastening screws type hex socket cylindrical head M6X20 ISO 4762.
Combs P/N TC3000-16 and TC3000-17 are supplied complete with slot covers, bushings and fastening screws type hex socket button head 1/4" x 5/8" UNI-ISO 7380.

METRIC STANDARD - To be used in combination with USPMG ATM 0085 chain



PART NUMBER TC3000-14

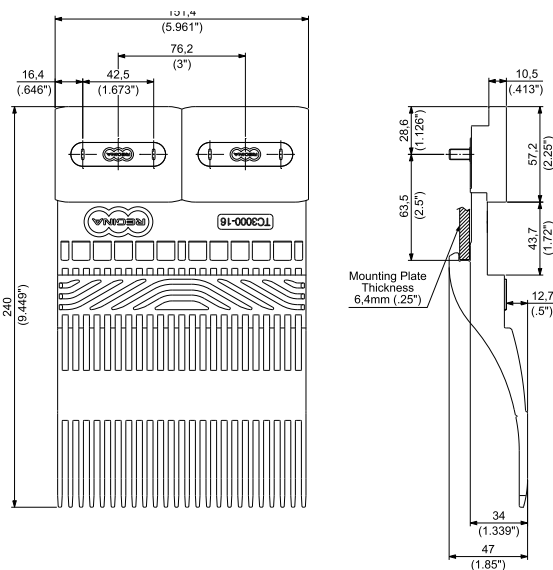
Suitable for modular belts or sideflexing chains 12,7 mm (0.50") thickness, installed side by side with ATM chain



PART NUMBER TC3000-15

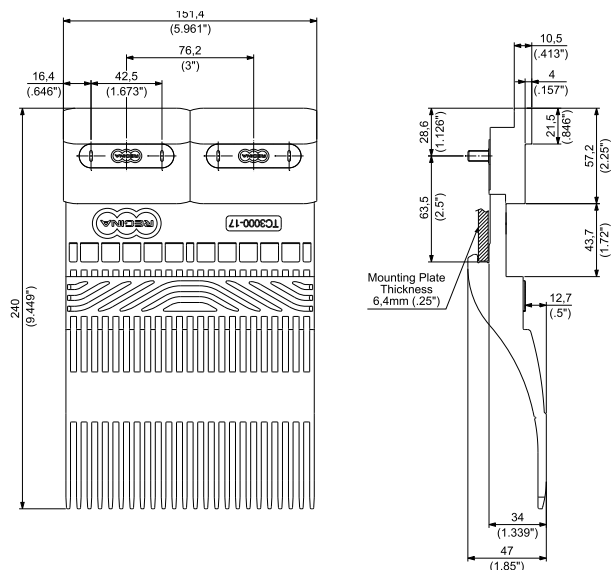
Suitable for modular belts or sideflexing chains 8,7 mm (0.34") thickness, installed side by side with ATM chain

IMPERIAL STANDARD - To be used in combination with 1305G ATM 450 chain



PART NUMBER TC3000-16

Suitable for modular belts 12,7 mm (0.50") thickness, installed side by side with ATM chain



PART NUMBER TC3000-17

Suitable for modular belts 8,7 mm (0.34") thickness, installed side by side with ATM chain