



DYNAMIC NOSE BARS FOR 1/2" PITCH SERIES

Dynamic nose bars for nose-over transfer applications

Regina dynamic nose bars provide successful end-to-end transfers at high speed, while reducing wear on both bar and belt. The integrated dynamic steel rollers minimize heat development and reduce the force required to pull the belt around the bar. Regina dynamic nose bars are designed to work in combination with Regina 1/2" pitch belts.



KEY FEATURES & BENEFITS

BELT PULL REDUCTION AND ENERGY SAVING

The stainless-steel dynamic rollers are equipped with bearings to minimize the friction with the belt, allowing for significant pull reduction and lower power consumption.

MAXIMIZED WEAR LIFE

The dynamic rollers provide for a rolling surface in contact with the belt, minimizing the wear of the bar and belt. This is a critical matter when using traditional static nose bars at high speed.

EASY INSTALLATION AND COST SAVING

Regina dynamic nose bar design perfectly fits conveyors equipped with U-profile wear strips installed on Ω steel profiles, as they have the same height. This eliminates any need for custom adjustments. The modular design allows for side by side installation of multiple bars to fit metric (85mm width increments) standard conveyors.

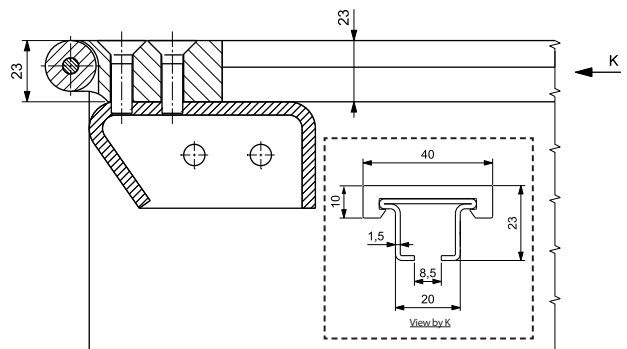
IMPROVED NOSE-OVER TRANSFER

The wide dynamic rollers guarantee maximum belt support across its entire width, improving belt interaction while it wraps around the bar and avoiding any belt deformation at the maximum pull area. This is a critical matter when using dynamic nose bars that are equipped with bearings only and no dynamic rollers.

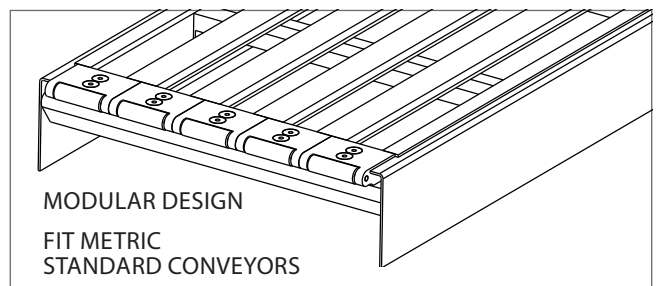
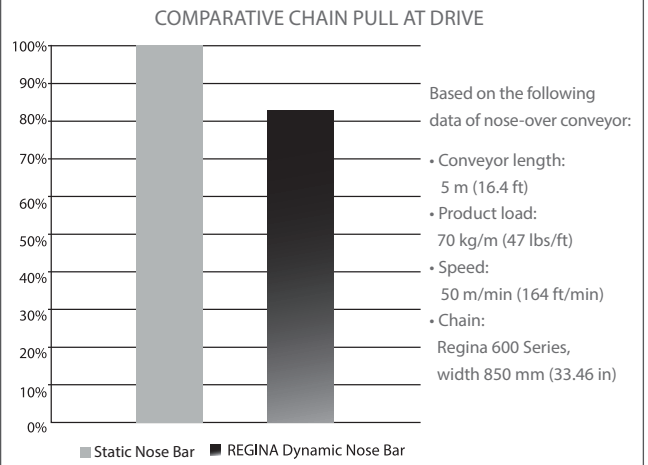
HYGIENIC DESIGN

The solid design of the dynamic nose bar allows for easy cleaning, ensuring the maximum hygiene in application.

SAME HEIGHT (23 MM) OF WEAR STRIPS ON Ω STEEL PROFILE



20% ENERGY SAVING USING REGINA DYNAMIC NOSE BARS



MODULAR DESIGN
FIT METRIC
STANDARD CONVEYORS

SUITABLE FOR REGINA BELT SERIES:

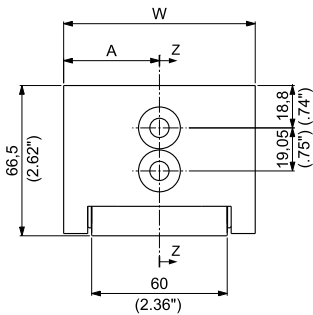
- 600 / 610
- LPB 610
- 500
- HF 510

MATERIALS

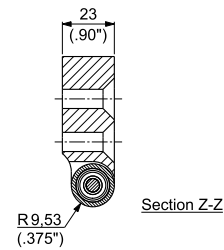
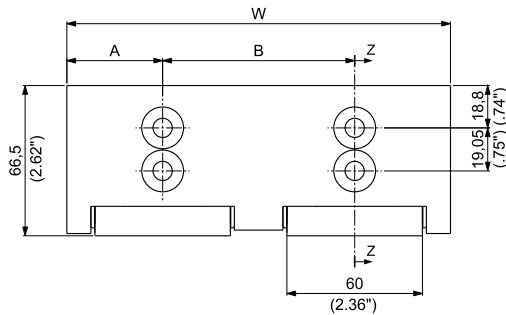
PLATE: UHMWPE with lubricant
 ROLLERS: STAINLESS STEEL

NOTE: Nose bars use M8 flat head screws UNI 5933 (NOT INCLUDED)

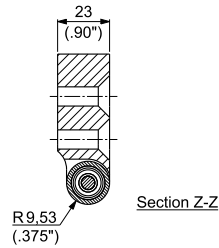
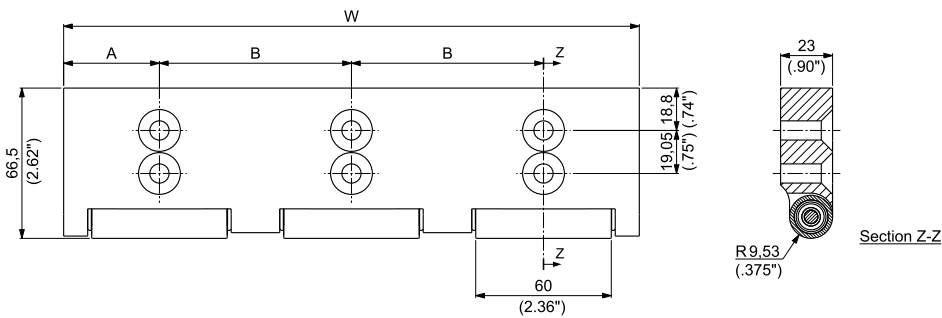
WIDTHS W: 85 MM



WIDTHS W: 170 MM



WIDTHS W: 255 MM



PART NUMBER	WIDTH W		A		B		WEIGHT		STANDARD PACKAGING	FOR BELTS SERIES
	mm	inch	mm	inch	mm	inch	kg	lbs		
CC000220	85,0	3.35	42,5	1.67	-	-	0,17	0.22	10 pcs	600 / 610 LBP 610 500 HF 510
CC000221	170,0	6.69	42,5	1.67	85,0	3.35	0,33	0.73	6 pcs	
CC000222	255,0	10.04	42,5	1.67	85,0	3.35	0,50	1.10	3 pcs	